

# Hike #388

SUBSTITUTE HIKE DUE TO BLUE RIDGE FOREST FIRE  
RED BOX TO STRAWBERRY PEAK

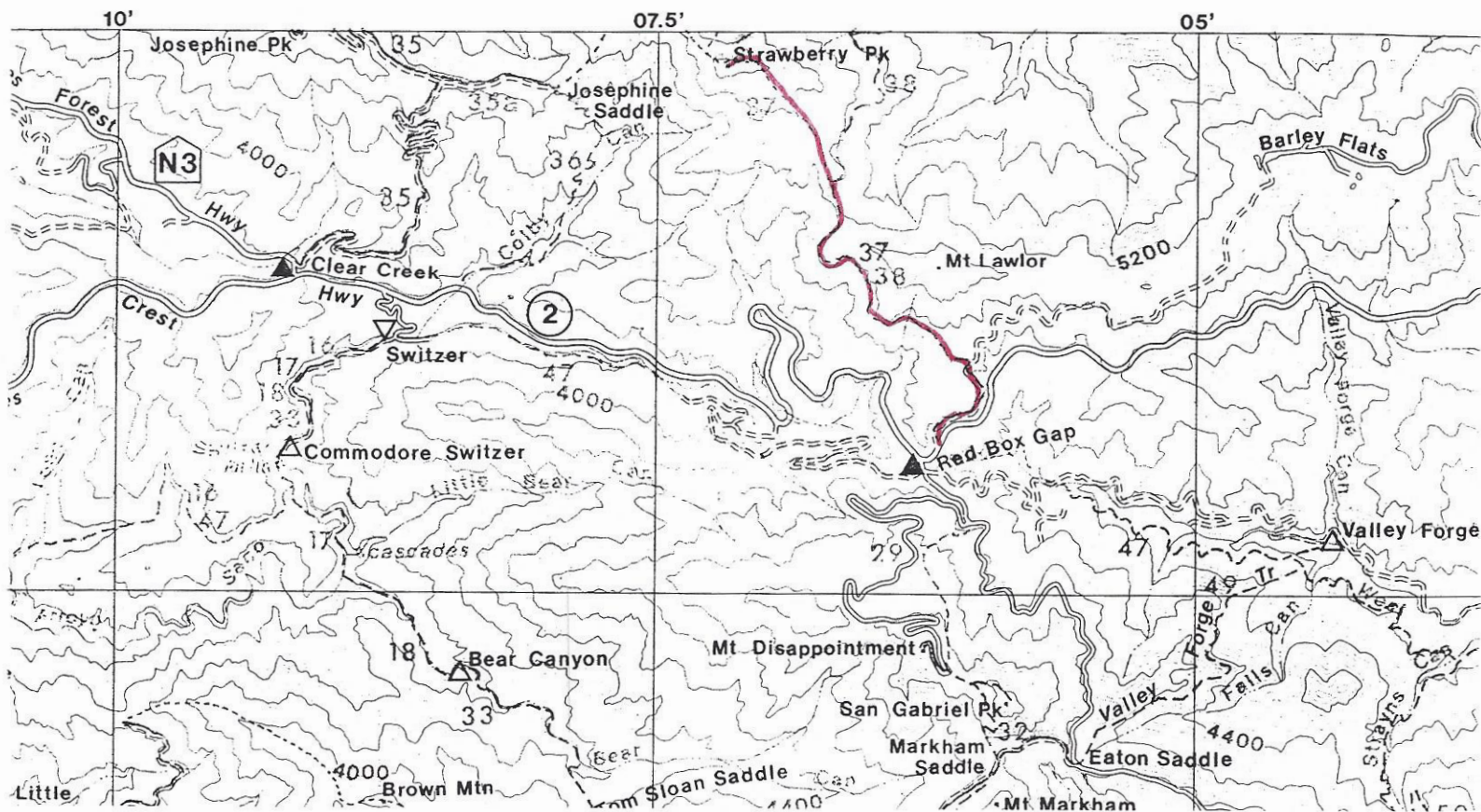
August 27, 1997

5 1/2 miles round trip, 1500' elev. gain

## DESCRIPTION

Drive up the Angeles Crest Highway to Red Box Ranger Station, 15 miles from La Canada. Park your car on the east side of the Mount Wilson turnoff. Arrive early enough to take advantage of the fine "facilities" at Red Box.

Cross the Angeles Crest Highway and follow it northeast about 50 yards to the beginning of the Barley Flats fire road. Turn left (north) and proceed past the locked gate up the fire road. In 1/2 mile you will come to a bulldozed swath leading up to the left. Follow this old tractor-way up to the ridge just south of Mt. Lawlor, then pick up an obvious but unmarked trail that contours around the mountain, high above the Angeles Crest Highway, to the saddle between Lawlor and Strawberry Peak—2 miles from the start. From the saddle, turn left (northwest) and follow a faint climbers' pathway up the ridge, through chaparral and over boulders, to the summit—800' gain in 3/4 mile.



Jack Robinson