

Hike #409

Tom Kent

Tapia Park to Mesa Peak to Tapia Park

OTP & Others

February 18, 1998

Directions to Parking

From Santa Monica: take Highway 1, PCH north. Turn right on Malibu Canyon Road. Parking is located on the left side of the road approximately 700 feet north of the tunnel (between 4.5 and 5.0 miles north of PCH.)

Note: if you reach Pima Road, you have gone too far.

From the San Fernando Valley: take Highway 101 north. Exit at Las Virgenes Canyon Road. Turn left (south) at the end of the exit ramp. Parking is on the right side of the road, just south of Pima Road (between 4.5 and 5.0 miles south of Hwy 101.)

Note: Some where along the way Las Virgenes changes name to Malibu Canyon.

Hike Description

Approximate distance: 6 miles round trip.

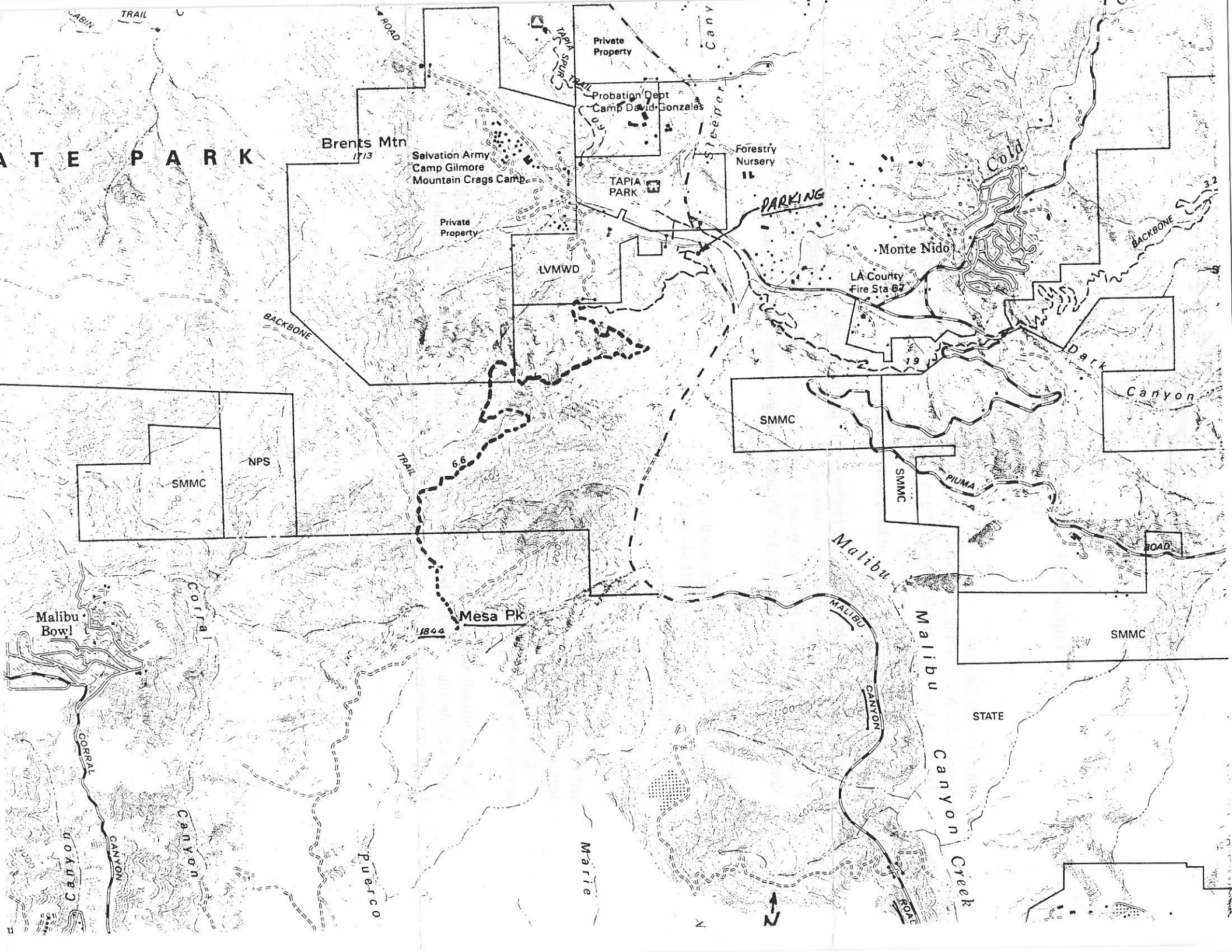
Elevation gain/loss: 1344 feet/1344 feet.

Hiking Time: about 3 ½ hours.

Difficulty: Moderate.

The Backbone/Mesa Peak Motorway trail starts a few yards up from the parking lot to the left side of the paved LVMWD road. The trail ascends steeply at first gaining about 1200 feet in 2 ½ miles. There is a three way intersection at this point. We will stay to the left going on another ¾ to 1 mile to Mesa Peak (1844 feet). Lunch at the top (if suitable) and return to the Parking lot.

The Peak affords sweeping panoramic views of Point dume, Santa Monica Bay and Palos Verdes Peninsula. If it is a clear day Catalina, San Clemente, Anacapa and Santa Cruz Islands may be visible.



ATE PARK

Brents Mtn
1713

Salvation Army
Camp Gilmore
Mountain Crags Camp

Private Property

Probation Dept
Camp David Gonzales

Forestry
Nursery

TAPIA
PARK

PARKING

Monte Nido

LA County
Fire Sta 67

LVMWD

Private Property

SMMC

NPS

SMMC

SMMC

Dark Canyon

Malibu Bowl

Mesa Pk

1844

Malibu
MALIBU
CANYON

Malibu
CANYON

STATE

SMMC

CANYON

CANYON

Puercoc

Marie

Malibu
CANYON
Creek

