

Boney Mountain to Serrano Valley  
Via Circle X and Serrano Road  
Another Segment of the Backbone Trail



OTP Hike # 449 - 12/16/98 - 9:30 AM - Vicky Ritter

Distance 10.6 miles  
Total Elevation Gain/Loss 1625/2450 Ft.  
Hiking Time 5:16  
Difficulty Moderate - *STRENUOUS*

*Long Pants & Shirts  
Recommended*

Starting at the Backbone Trailhead at an elevation of 2,100 Ft., this trail provides views of the Conejo and San Fernando Valleys, as well as the Pacific Coast near the top of Sandstone Peak at 2950 Ft. The Backbone Trail continues West toward Big Sycamore Canyon dropping gradually with a view to the North of the Point Mugu Wilderness.

The trail meets the Old Boney Trail in 6.3 miles and at 1050 Ft. elevation, and follows a ridge with views to Sycamore Canyon and the Serrano Valley. We travel a little longer enjoying the views and leave the Backbone Trail to the Left on the Serrano Valley Trail (7.2 miles, 1050 Ft.).

We drop into the Serrano Valley and go a short distance cross country in grassland and across a streambed to meet the trail at the "ranch gate". The trail goes gradually down hill, crosses a stream bed and up to the gated off part of Serrano road.

.....  
 □ **THIS IS A BEAUTIFUL HIKE AND A SECTION OF THE BACKBONE TRAIL WE HAVE NOT** □  
 □ **DONE BEFORE.** □  
 □ **NOTE: REFRESHMENTS WILL BE AT THE END OF THE HIKE ON SERRANO ROAD** □  
 □ .....  
 □ .....  
 □ .....

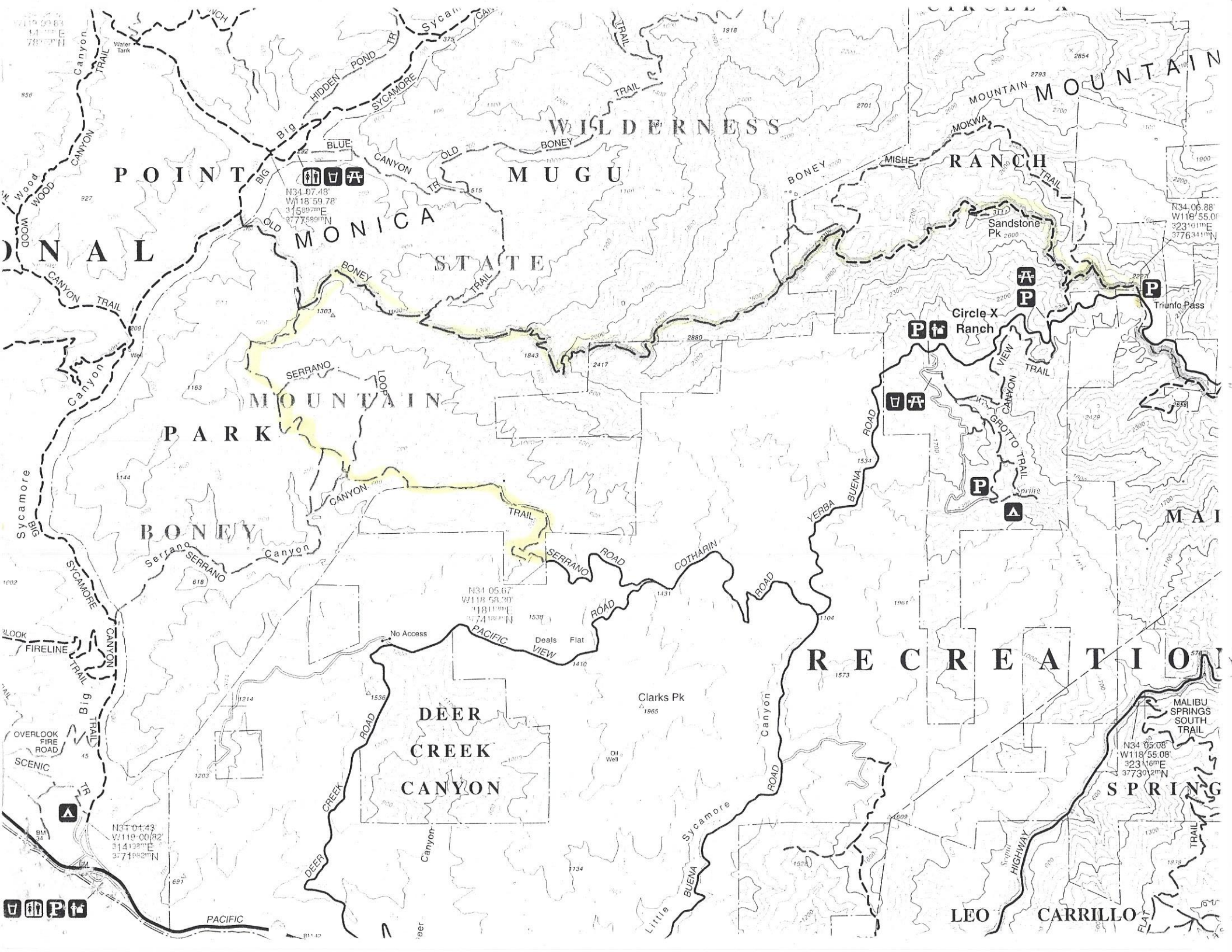
We will have a CAR/VAN SHUTTLE with a general plan as follows to minimize the long drive the Southerners already have:

1. The designated vans (depending on need) from the south will drive 3.3 miles up Yerba Buena Road from PCH to Cotharan road. They will transfer their passengers to valley cars (about 9:00) which will ferry them to the 2nd parking lot above circle X Ranch. The vans will proceed to the left 1.5 miles on Cotharan road, then 1 mile to the right on Serrano road.
2. Designated valley vans will drop off their passengers at the start hike parking lot and proceed to the end of Serrano road.
3. A valley driver will meet the van drivers (about 9:10) and ferry them to the start hike parking lot.
4. Hikers who are not hiking the loop can hike part way at either end or hike south of the Circle X Ranch to a grotto (3.5 miles round trip)
5. All others go the 2nd parking lot above Circle X Ranch.

**Travel Directions:**

1. From Hwy 101, turn south on 23 and go 6 miles and turn right on Mulholland, go 2.2 miles, turn right on Little Sycamore which becomes Yerba Buena. Park at the 1st parking lot at 3.9 miles.
2. From PCH, turn right at Yerba Buena, go 3.3 miles and (1) drop your passengers if you are a designated van or (2) drive north 3.5 miles to the parking lot on left (1.7 miles past Circle X ranger station).





POINT OF VIEW MOUNTAIN

WILDERNESS

MOUNTAIN MOUNTAIN

MONICA STATE

STATE

MOUNTAIN

PARK

BONEY

DEER CREEK CANYON

RECREATION

SPRING

LEO CARRILLO

N34 07.48'  
W118 59.78'  
31589.71'E  
377789011N

N34 06.88'  
W118 55.01'  
3231011'E  
377641111N

N31 05.67'  
W118 58.30'  
31811111'E  
377411111N

N34 09.08'  
W118 55.08'  
32311611'E  
3773011211N

N34 04.43'  
W118 00.82'  
31413211'E  
377198211N

