

Hike #641

Eaton Saddle to Mt. Lowe or Inspiration Point or Panorama Point .
About 3 miles, 6 miles, 8 miles respectively
December 4, 2002, 9:30
Henry

From La Canada take Angelus Crest Highway to Red Box which is at the junction of Mt. Wilson Road. There are flush toilets here usually operational. If not you may use the portable restroom. There is no more bathroom beyond this point.

Then you proceed by car on Mt. Wilson Road for approximately 2 or 3 miles to unmarked Eaton Saddle.

From Eaton Saddle (elev=5100) you go up gently on the fire road for 0.5 mile to Markham Saddle (Elev=5400). From there you go up on your left on the Mt. Lowe East Trail for 0.8 mile to the junction to Mt. Lowe West Trail (Elev=5400). Remember the shape of this junction so as not to make a mistake on your return trip.

At this junction take the West Trail by making a sharp right turn and continue going up till you can't go any higher. You are now at the top of Mt. Lowe (Elev=5603). We have cookies here. If you don't want to go any farther you may return from here the way you came.

If you want to continue, go down the way you came for a few hundred feet till

you come to a Y and take the left fork and continue to go down till you come to the fire road (Elev=4400). This is a rather steep down hill trail with numerous switch backs. This trail is known as the Mt. Lowe West Trail. At the fire road make a left turn and keep going more or less horizontally till you come to a Y. You take the left branch and go up gently to Inspiration Point (Elev=4500ft). If you don't want to continue you may have lunch here.

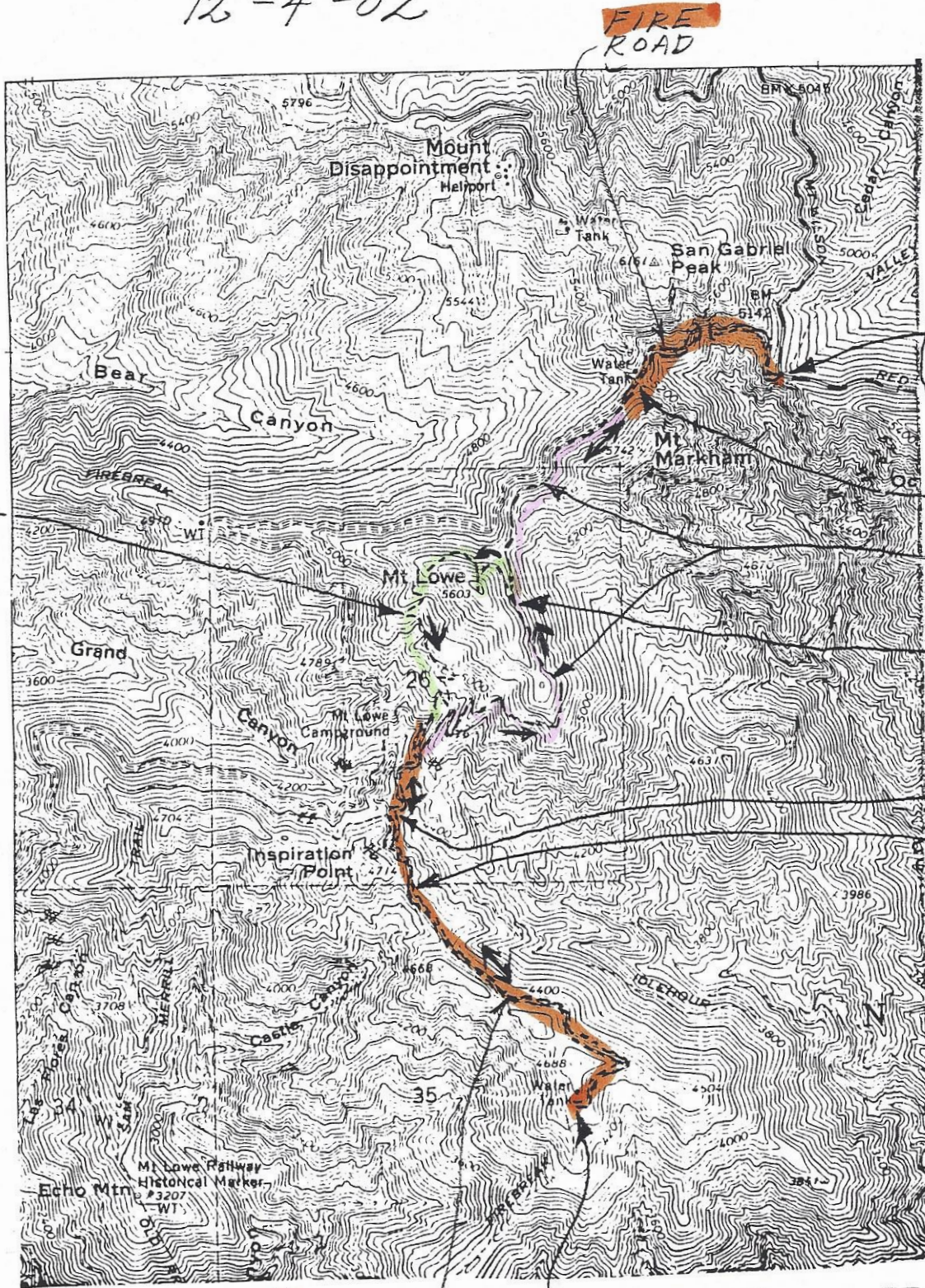
If you are ambitious you may keep on going on the fire road till it suddenly

quits at Panorama point. This is a level road and it is an easy walk of about 1 mile one way. From here you return to Inspiration Point.

From Inspiration Point you go back the fire road to Mt. Lowe East Trail and climb the steep trail (from elev. 4400 to 5400 ft). With numerous switchbacks till it levels off and at the junction to West Trail remember go back the way you came and return to the trail head.

EATON SADDLE TO MT. LOWE
 OR INSPIRATION POINT
 OR PANORAMA POINT

HENRY ~~5-22-02~~
 12-4-02



MT. LOWE -
 WEST
 TRAIL

EATON
 SADDLE
 5100'

MARKHAM
 SADDLE
 5300'
 MT. LOWE
 EAST
 TRAIL

EAST
 WEST
 TRAIL
 JCT
 5400'

"Y" 4400'
 INSPIRATION
 POINT
 4500'

PANORAMA POINT
 4500'

0 1 2 MILE